

# measuring devices

- 48 PH-PD METER
- 49 LENS CLOCKS
  - THICKNESS GAUGES
- 50 CALIPERS
- 51 PD RULERS
- 52 FORMER
  - OCCLUDER
  - CROSS CYLINDER
- 53 CONFIRMATION TESTS
  - CROSS CYLINDER SET
- 54 KIDS TRIAL FRAMES
- 55 TRIAL FRAMES
- 56 TRIAL LENS SET





## PH-PD METER

400510 // 200 x 75 x 20 mm / 30g

- Precise and rapid measurements of pupil heights and pupil distance, using the boxing system, for all types of frame
- Easy to install on the frame
- Graduated front designed to adapt to all frame types
- Delivered with its presentation box



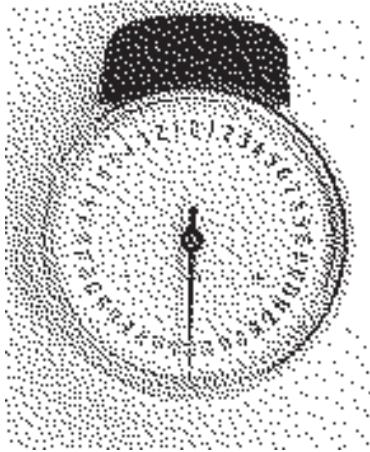
Packing Suggestion

## LENS CLOCK

400110 // 62 g

• Lens clock with refractive index nd 1.53

Measuring Scope // 0 to +/- 20 dpt

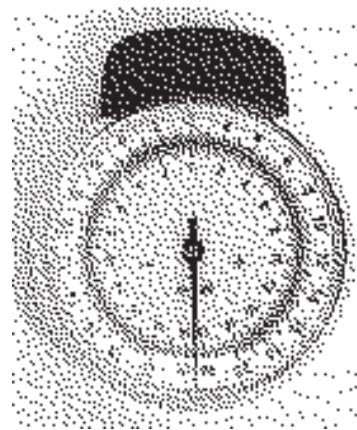


## LENS CLOCK

400120 // 62 g

• Lens clock with refractive index nd 1.49 and 1.60

Measuring Scope // 0 to +/- 18 dpt



## THICKNESS GAUGE

400210 // 137 x 85 x 37 mm / 162.5 g

Possible to calibrate using calibration screw

With an arm depth of 45mm

Measuring Scope // 0-10 mm

Accuracy // 0.05 mm



Calibration Screw

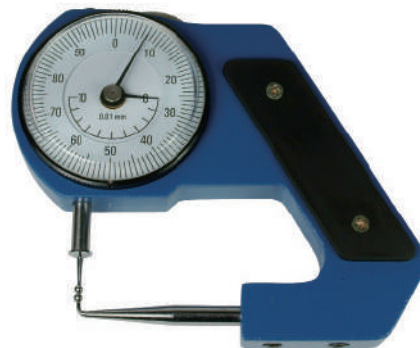
## THICKNESS GAUGE

400220 // 136 x 85 x 37 mm / 180.5 g

With an arm depth of 45mm

Measuring Scope // 0-10 mm

Accuracy // 0.01 mm



## THICKNESS GAUGE

400230 // 178 x 110 x 36 mm / 374 g

Especially long arms measuring 80mm and ball point tips

Measuring Scope // 0-20 mm

Accuracy // 0.05 mm



## DIGITAL LENS CALIPER

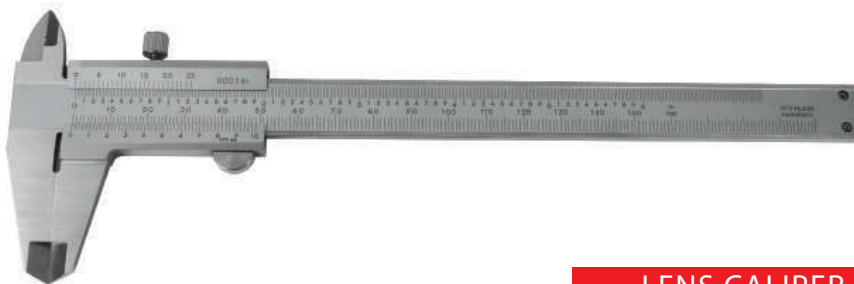
400310 // 235 x 78 x 15 mm / 315 g

Digital display with both "mm" and "inch" readings

Measuring Scope // 0-150 mm

Depth of Mouth // 40 mm

Power // 1.5V round cell battery



## LENS CALIPER

400320 // 230 x 78 x 7 mm / 170 g

Measuring Scope // 0-150 mm

Depth of Mouth // 40 mm



measuring  
devices

## MULTIPURPOSE PD RULER

400410 // 1 piece / 155 mm / 5 g

Measuring Scope // 0-145 mm



## PD RULER

400420 // 1 piece / 180 mm / 10 g

Measuring Scope // 0-170 mm



## TRANSPARENT PD RULER

400430 // 1 piece / 205 x 25 mm / 5 g

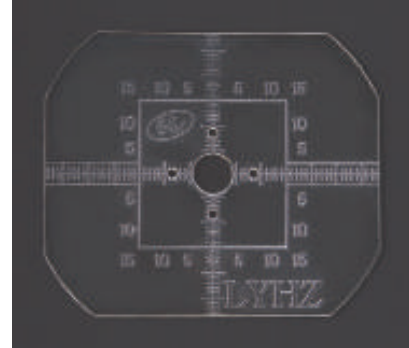
Measuring Scope // 0-160 mm



## FORMER

6050100 // 100 pieces / 65 x 55 mm / 5 g

Transparent plastic with scale on one side, can be cut with paper scissors.



## OCCLUDER

400901 // 245 mm / 22 g

For cover test



## MULTIPE PINHOLE OCCLUDER

400902 // 245 mm / 21 g

To measure vertical and lateral associated heterophoria for both near and distance vision



## CROSS CYLINDER

400801 +/- 0.25dpt

// 1 piece /  $\varnothing$ 35 mm / 25 g /

400802 +/- 0.50dpt

// 1 piece /  $\varnothing$ 35 mm / 25 g



## BINOCULARS CONFIRMATION TEST

∅ 35mm

Confirmation Test  $\pm 0.25$  or  $\pm 0.50$  dpt,  
Adjustment of PD 46 to 82mm

**400804** // 1 piece / 72 g

Effect in diopter : Sph  $\pm 0.25$ dpt.

**400805** // 1 piece / 72 g

Effect in diopter : Sph  $\pm 0.50$ dpt.



## CONFIRMATION TEST

∅ 35mm

Confirmation Test  $\pm 0.25$  or  $\pm 0.50$ dpt,

**400806** // 1 piece / 25 g

Effect in diopter : Sph  $\pm 0.25$ dpt.

**400807** // 1 piece / 25 g

Effect in diopter : Sph  $\pm 0.50$ dpt.



## CROSS CYLINDER SET

**400800** // 1 piece / 50g

∅ 35mm 1ps  $\pm 0.25$ dpt. , 1pcs  $\pm 0.50$ dpt.

Available diopter :  $\pm 0.25D$   $\pm 0.50D$   $\pm 0.75D$   $\pm 1.00D$





## KIDS TRIAL FRAMES

400630 / 400631 / 400632 / 400633 / 400634

//  $\phi$  38mm

Available PD// 50/52/54/56

- Comfortable fitting and suitable for all standard 38mm trial lenses
- Holds up to 4 lenses per eye
- Ultra light, for optometrical refractions
- Resistant aluminium frame with Hypoallergenic plastic components
- Optical Quality

400630 // Set PD 50 mm, 52 mm, 54 mm, 56 mm

400631 // PD 50 mm

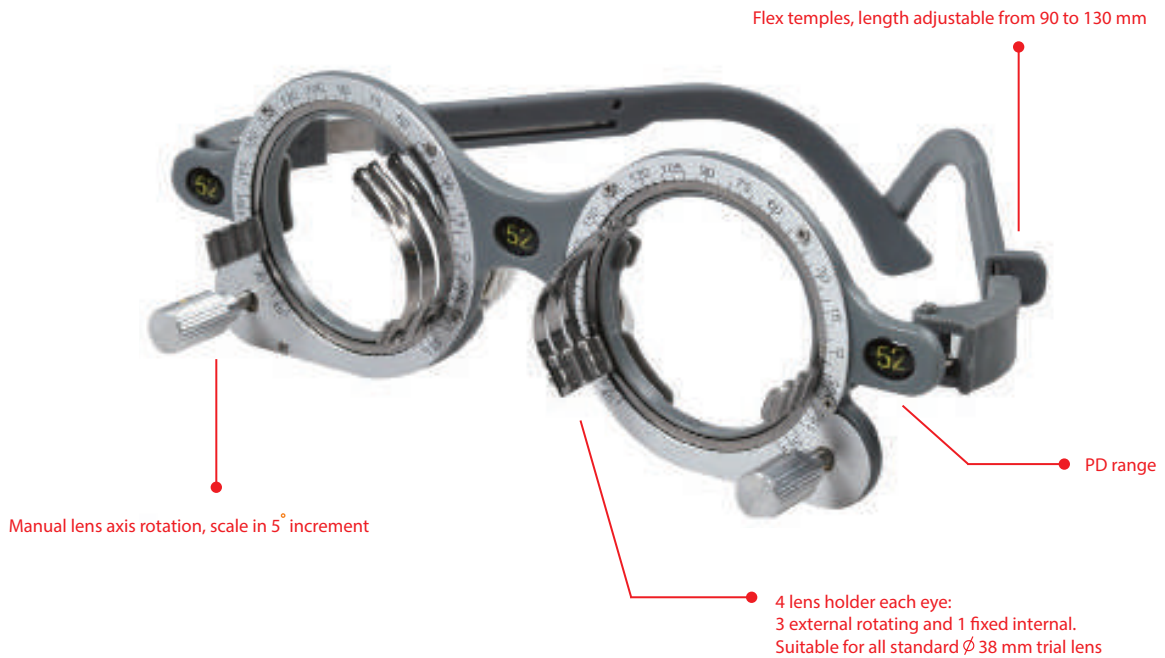
400632 // PD 52 mm

400633 // PD 54 mm

400634 // PD 56 mm

Package option // A : Individual box

B : PD 50 to 56 mm, 4pcs in a paper box

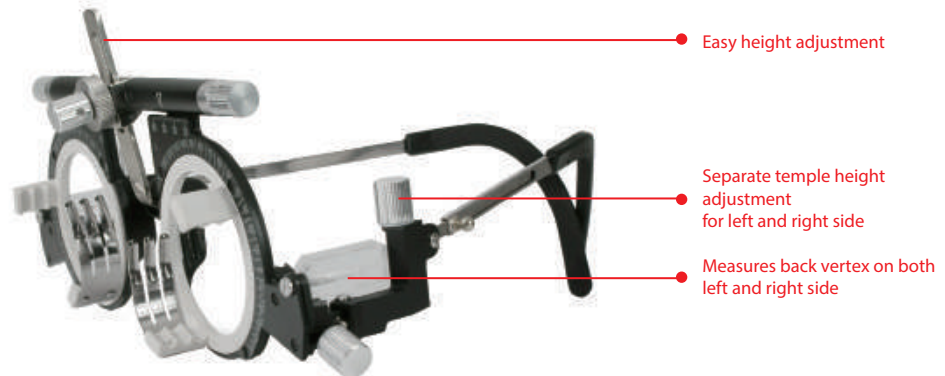


## UNIVERSAL TRIAL FRAME

400610 //  $\phi$  38 mm / PD adjustable from 50-80 mm / 61 g

- Comfortable fitting and easily adjustable frames suitable for all standard 38mm trial lens.
- Nosepad and temples ends have extra soft quality
- Delivered in paper box

Holds up to 5 lenses per eye.

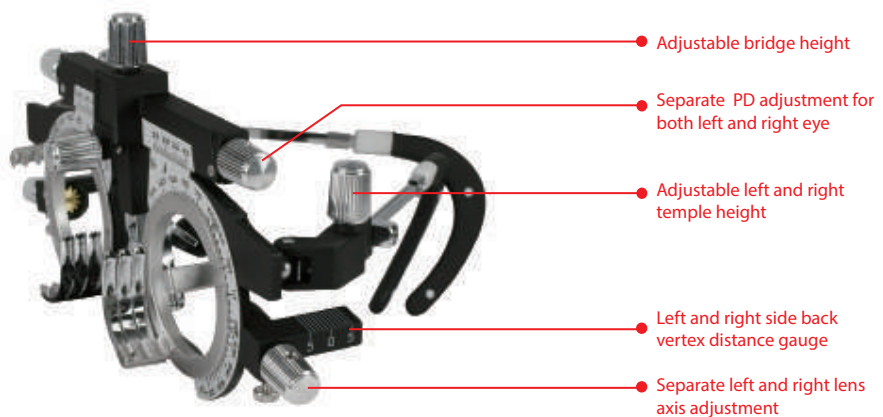


## UNIVERSAL TRIAL FRAME

400620 //  $\phi$  38 mm / PD adjustable from 48-80 mm / 80 g

- Comfortable fitting and easily adjustable frames suitable for all standard 38mm trial lens.
- Nosepad and temples ends have extra soft quality
- Delivered in paper box

Holds up to 4 lenses per eye.





### TRIAL LENS SET

with 260 pieces lens with METAL RIMS

**400710** // 540 x 350 x 100 mm / 6.6 kg

- In high quality metal case
- Suitable for standard trial frame with 38mm lenses

Content:

39 pairs of plus (+) and minus (-) lenses

20 pairs of (+) and (-) cylinders

14 pieces of prism lenses

10 accessory lenses

## TRIAL LENS SET

with 260 pieces lens with PLASTIC RIMS

**400810** // 540 x 350 x 100 mm / 6.6 kg

- In high quality metal case
- Suitable for standard trial frame with 38mm lenses

Content:

39 pairs of plus (+) and minus (-) lenses

20 pairs of (+) and (-) cylinders

14 pieces of prism lenses

10 accessory lenses

Please contact with us for MOQ

